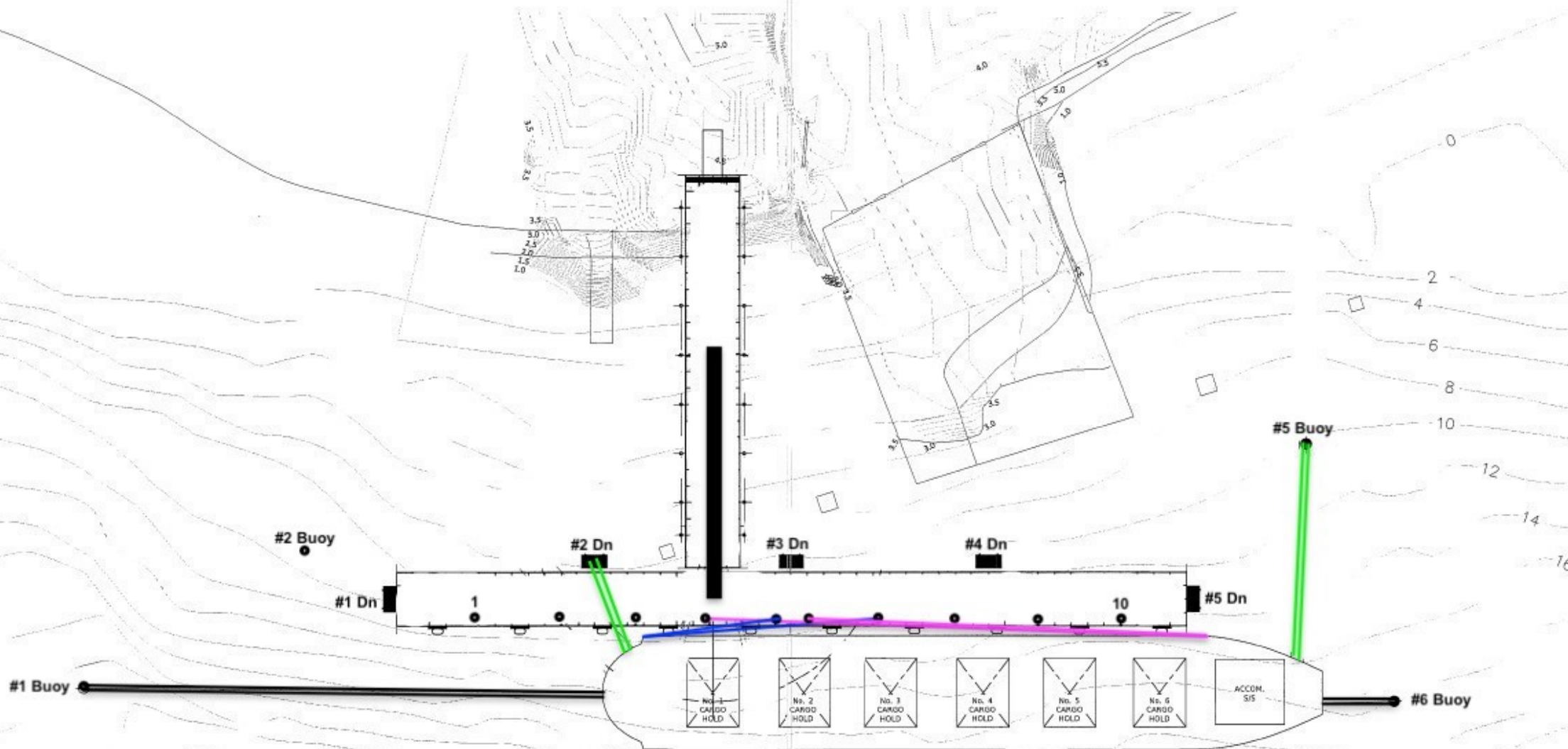


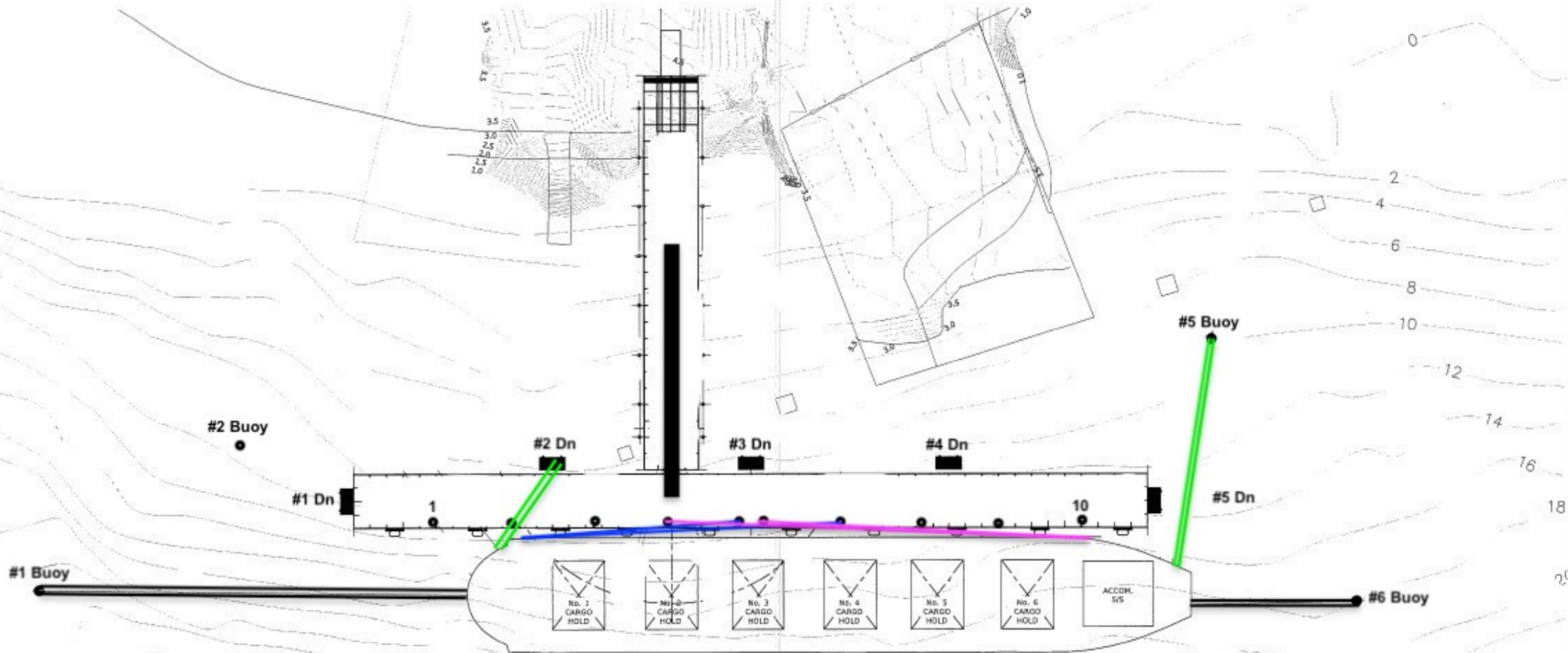
# CARGO HOLD #1



## STANDARD LINE CONFIGURATION - HOLD #1

- Head Lines - #1 Buoy (x2)
- Fwd Breast Lines - #2 Dn (x2)
- Fwd Spring Lines - #5 and #7 Bollards
- Aft Spring Lines - #4 and #6 Bollards
- Aft Breast Lines - #5 Buoy (x2)
- Stern Lines - #6 Buoy (x2)

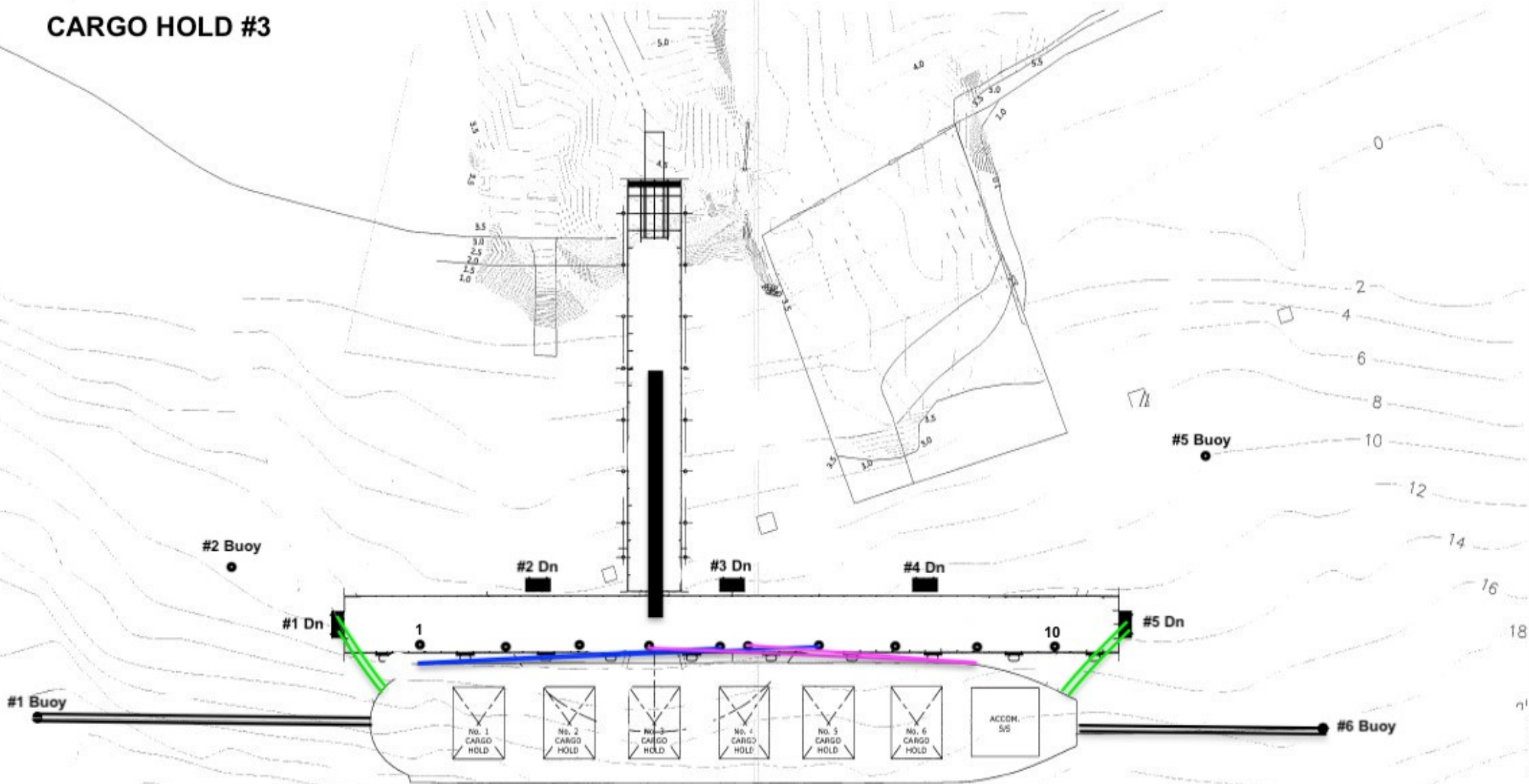
## CARGO HOLD #2



### STANDARD LINE CONFIGURATION - HOLD #2

- Head Lines - #1 Buoy (x2)
- Fwd Breast Lines - #2 Dn (x2)
- Fwd Spring Lines - #5 and #7 Bollards
- Aft Spring Lines - #4 and #6 Bollards
- Aft Breast Lines - #5 Buoy (x2)
- Stern Lines - #6 Buoy (x2)

# CARGO HOLD #3

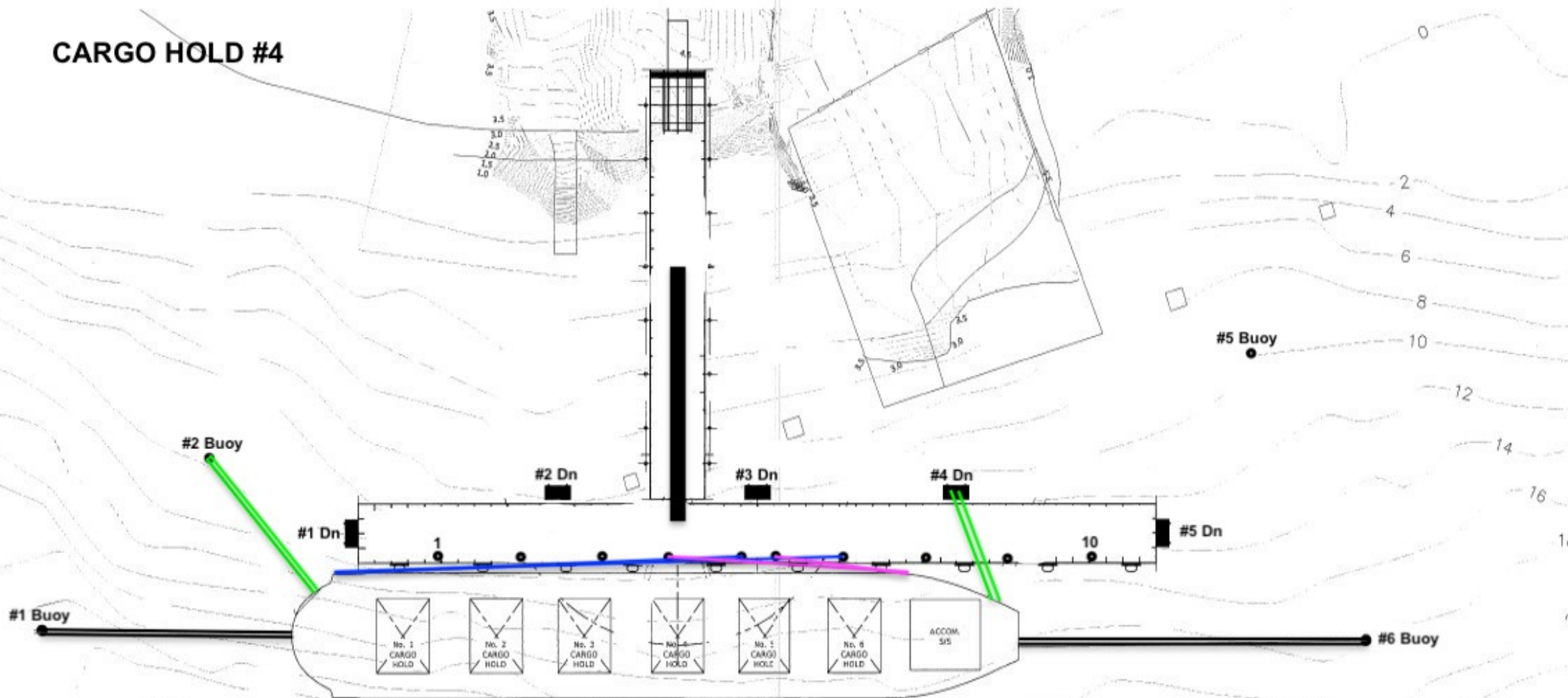


## STANDARD LINE CONFIGURATION - HOLD #3

- Head Lines - #1 Buoy (x2)
- Fwd Breast Lines - #1 Dn (x2)
- Fwd Spring Lines - #5 and #7 Bollards
- Aft Spring Lines - #4 and #6 Bollards
- Aft Breast Lines - #5 Dn (x2)
- Stern Lines - #6 Buoy (x2)



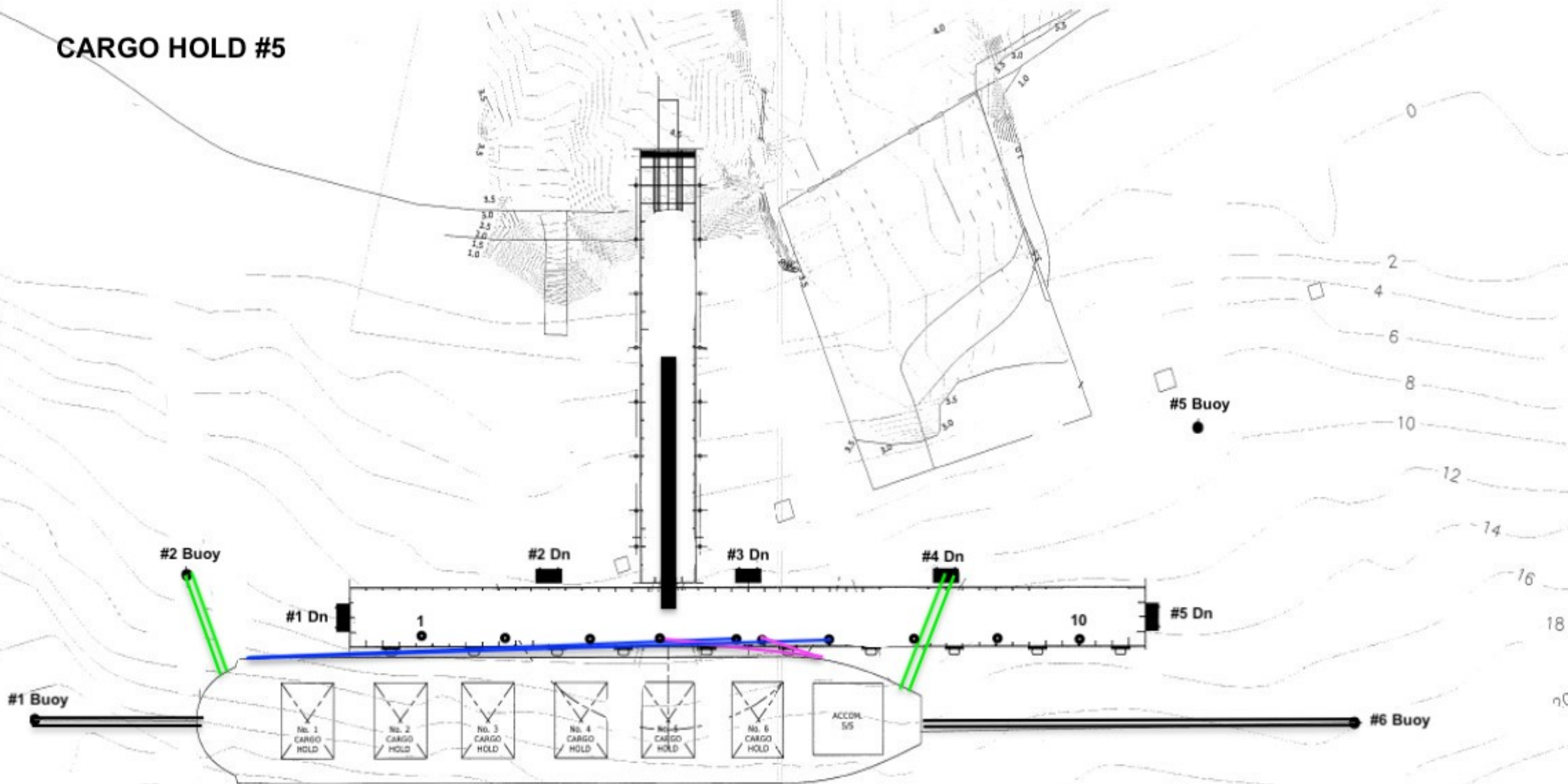
# CARGO HOLD #4



## STANDARD LINE CONFIGURATION - HOLD #4

- Head Lines - #1 Buoy (x2)
- Fwd Breast Lines - #2 Buoy (x2)
- Fwd Spring Lines - #5 and #7 Bollards
- Aft Spring Lines - #4 and #6 Bollards
- Aft Breast Lines - #4 Dn (x2)
- Stern Lines - #6 Buoy (x2)

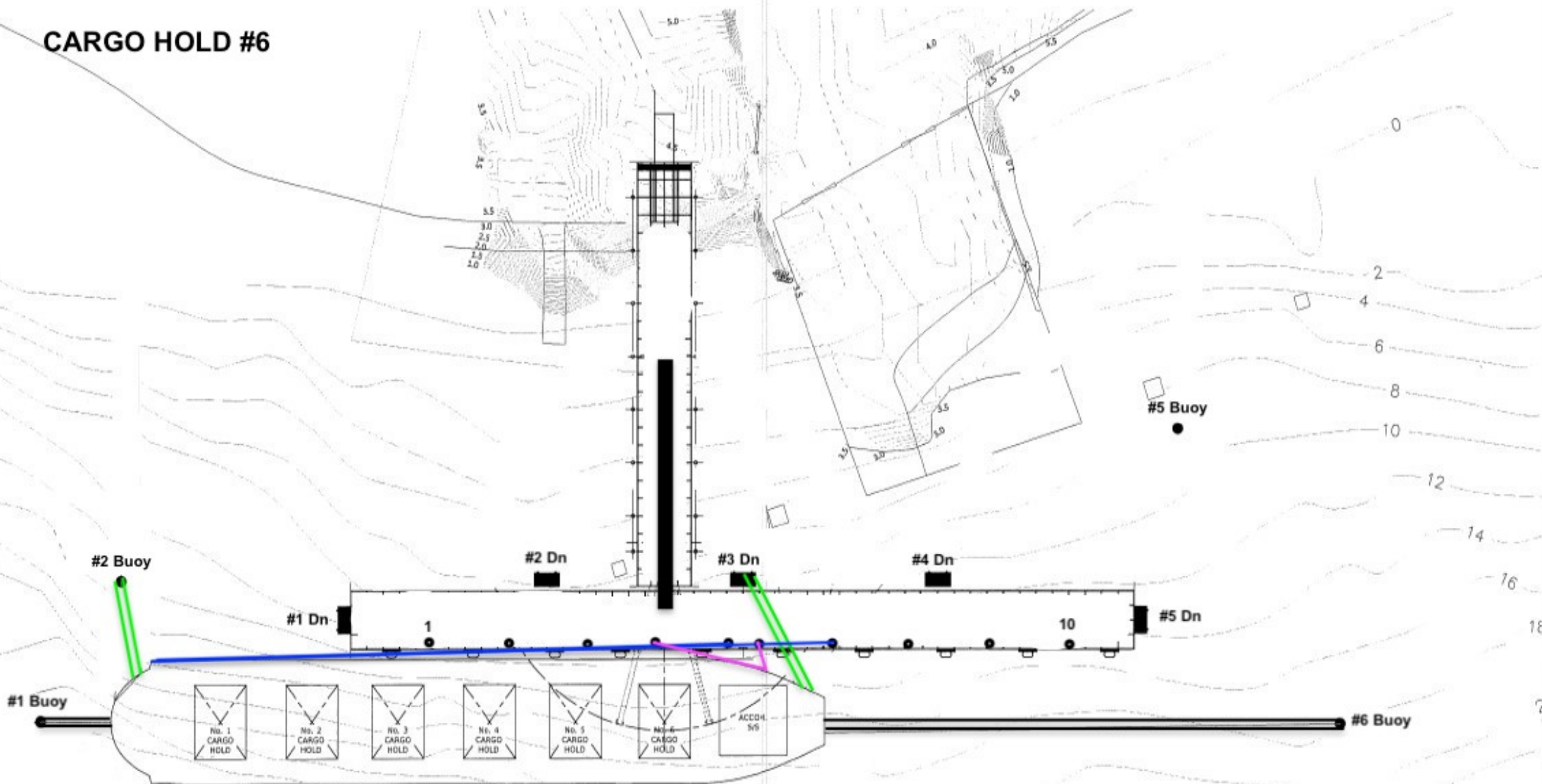
# CARGO HOLD #5



## STANDARD LINE CONFIGURATION - HOLD #5

- Head Lines - #1 Buoy (x2)
- Fwd Breast Lines - #2 Buoy (x2)
- Fwd Spring Lines - #5 and #7 Bollards
- Aft Spring Lines - #4 and #6 Bollards
- Aft Breast Lines - #4 Dn (x2)
- Stern Lines - #6 Buoy (x2)

# CARGO HOLD #6



## STANDARD LINE CONFIGURATION - HOLD #6

- Head Lines - #1 Buoy (x2)
- Fwd Breast Lines - #2 Buoy (x2)
- Fwd Spring Lines - #5 and #7 Buoys
- Aft Spring Lines - #4 and #6 Buoys
- Aft Breast Lines - #3 Dn (x2)
- Stern Lines - #6 Buoy (x2)